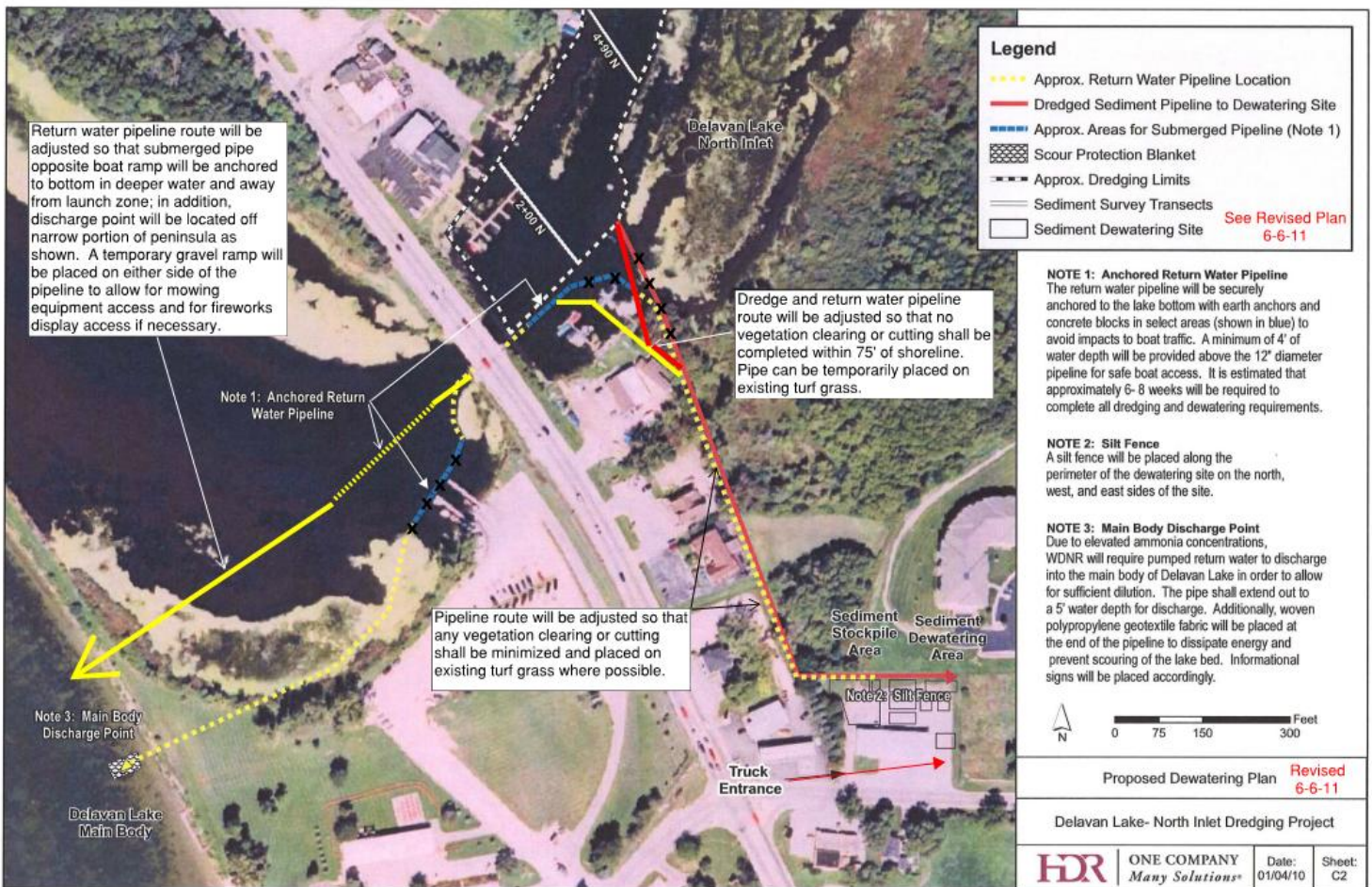


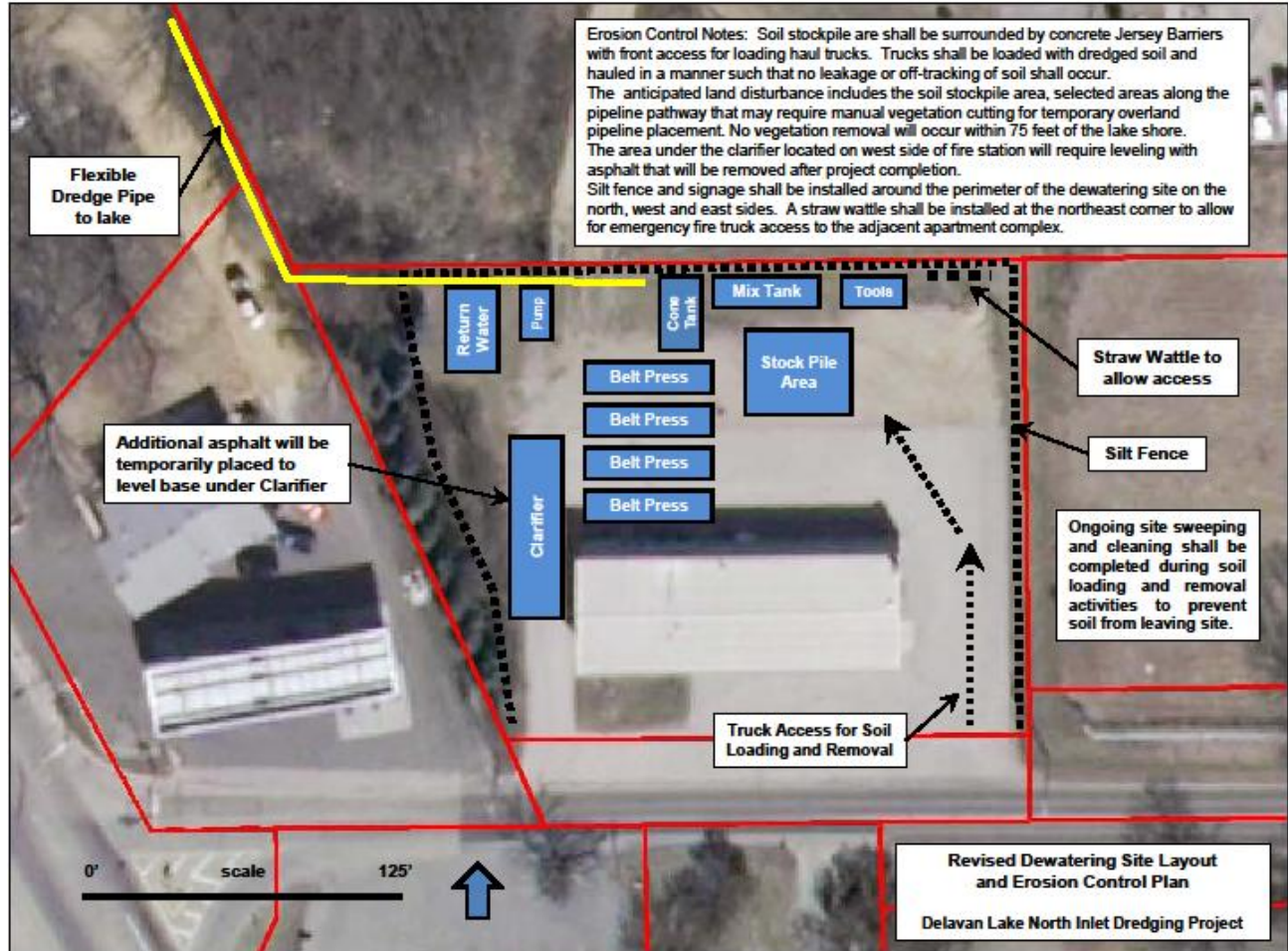
Delavan Lake North Inlet Dredging Project

July 4, 2011 Project Update

The figure below shows the piping plan for the project. You have doubtless seen the dredge pipes in the water. The line shown in red is the line coming from the dredge to the de-watering site that will transport the dredged sediment for dewatering and off-site hauling. The line in yellow returns clarified effluent water back into the main body of the Lake on the west side of the peninsula. JND Thomas estimates that more one-half mile of piping has been deployed and anchored in place. The lines are marked with flotation devices and or buoys and some pipe locations require they be submerged and anchored to the bottom to allow for safe boat passage. Dredging will start in the southern most section close to the Rt. 50 Bridge and will gradually move upstream in a northerly direction.



This is a schematic view of the sediment dewatering site equipment layout.



The Mix Tank or course material separator located at the north eastern section of the site initially receives the dredged sediment and is designed to removed any course material such as small rocks, debris and brush; the adjacent Cone tank to the west removes fine and course sandy material prior to passing through the filter presses and then the clarifier, which separate the fine grained solids from the lake water. The clarifier also utilizes the return water pump and make-up water tank and essentially returns clear water back to the lake that is compliant with WNDR regulatory requirements. The dewatered sediment will be temporarily placed within the stock pile area until it can be hauled off-site by Odling Construction to the approved facility located approximately three miles to the east.

The Moray dredge to be used on this project was manufactured by Dredging Supply Company and is shown below. It is a swinging ladder type cutterhead dredge that utilizes an 8-inch diameter dredge pipe to transport sediment to the dewatering plant.



JND Thomas is planning to test the pipeline and dewatering system on Tuesday morning July 5 and expects to be dredging and dewatering sediment later that day.



July 6, 2011 Update



Dredged sediment being dewatered and placed within the stock pile area as dredging in the lower end of the Inlet begins.



Keep checking this web site for project updates.

<http://www.townofdelavan.com/inlet-dredging-project>